

Come visit us!

It's easy to see what a great place Crescent Village is to live. Just take Exit 8 off the Northway and travel one mile west. We're on your left.



Where Good Living Begins

Vischers Ferry / Crescent Rd.
Clifton Park, NY 12065
(518) 371-5800
crescentvillage@tricityrentals.com
www.crescentvillage.com



• APARTMENT COMMUNITIES •

CRESCENT VILLAGE
APARTMENTS

*Where
good living
begins*



Luxury living made affordable

Crescent Village is a beautiful and special place to live, established in the heart of a wonderful residential neighborhood, yet surrounded by woods and miles of hiking trails. This unique community lies within walking distance of stores as well as a lovely nature preserve.

We offer one of the best locations you'll find anywhere — close to work, a wide array of cultural events, shopping of every kind, dining and entertainment, and year-round sports. Just minutes away lies the heart of the Capital District—Albany, Schenectady and Troy. To the north you'll find Saratoga, Lake George and the Adirondacks.

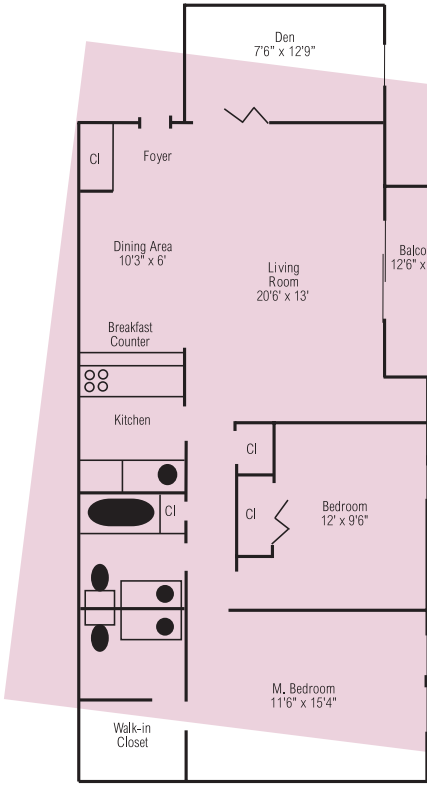
Here in Clifton Park, one mile west of the Northway, Exit 8, and minutes from Albany, you'll find everything you need from supermarkets to movie theaters, from shopping centers to fitness centers. And we're located in one of the finest school districts in the entire region —Shenendehowa.

At Crescent Village, you'll love the beautiful redwood decked swimming pool. A terrific gathering place for friends and family, this large pool area includes comfortable deck furniture and has its own rest/changing rooms. Nearby are barbecue grills and picnic tables.

At Crescent Village, you're connected to everything you need while enjoying all the privacy you desire.

With gas heat and hot water included, Crescent Village is an exceptional value. You'll also appreciate having your own thermostat and central air conditioning.

Select from one and two bedroom floor plans.



Two bedroom floorplans are available with 1 1/2 baths and den. (With den 900 sq. ft., without den 800 sq. ft.)

All two bedroom units have a breakfast bar, ceiling fan, and walk-in closet or double closet. All upper units have a balcony.

- fully applianced kitchen,
- wall-to-wall carpeting,
- secured intercom entries,
- laundry facilities in every building,
- extra, individual storage areas for all apartments,
- 24-hour emergency maintenance, and
- a beautiful swimming pool.

Our staff will make you feel right at home because at Crescent Village you're not just residents, you're our neighbors. We pride ourselves on responding to your needs in a prompt and friendly manner.